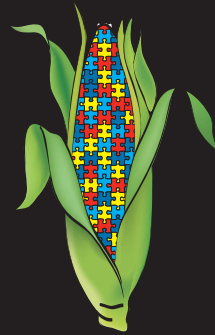
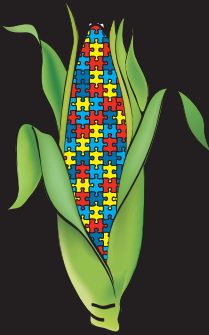




REAL ESTATE  
PRESENTS

# A Fall Festival To

Fight the Mystery



A Fundraiser to Support the EJ Autism Foundation  
Saturday, October 18th 10am - 3pm  
St. Lukes Lutheran Church  
3 Lawrence Lane, Bay Shore

FUN FOR THE WHOLE FAMILY!

Pumpkin Picking  
Face Painting 11-2pm  
Carnival Games  
Bounce House 10-1pm  
Mums & Fall Decor

Chinese Auction Raffle Baskets

*Fees for Participation in Activities.*

*Proceeds Donated to EJ Autism Foundation*

